



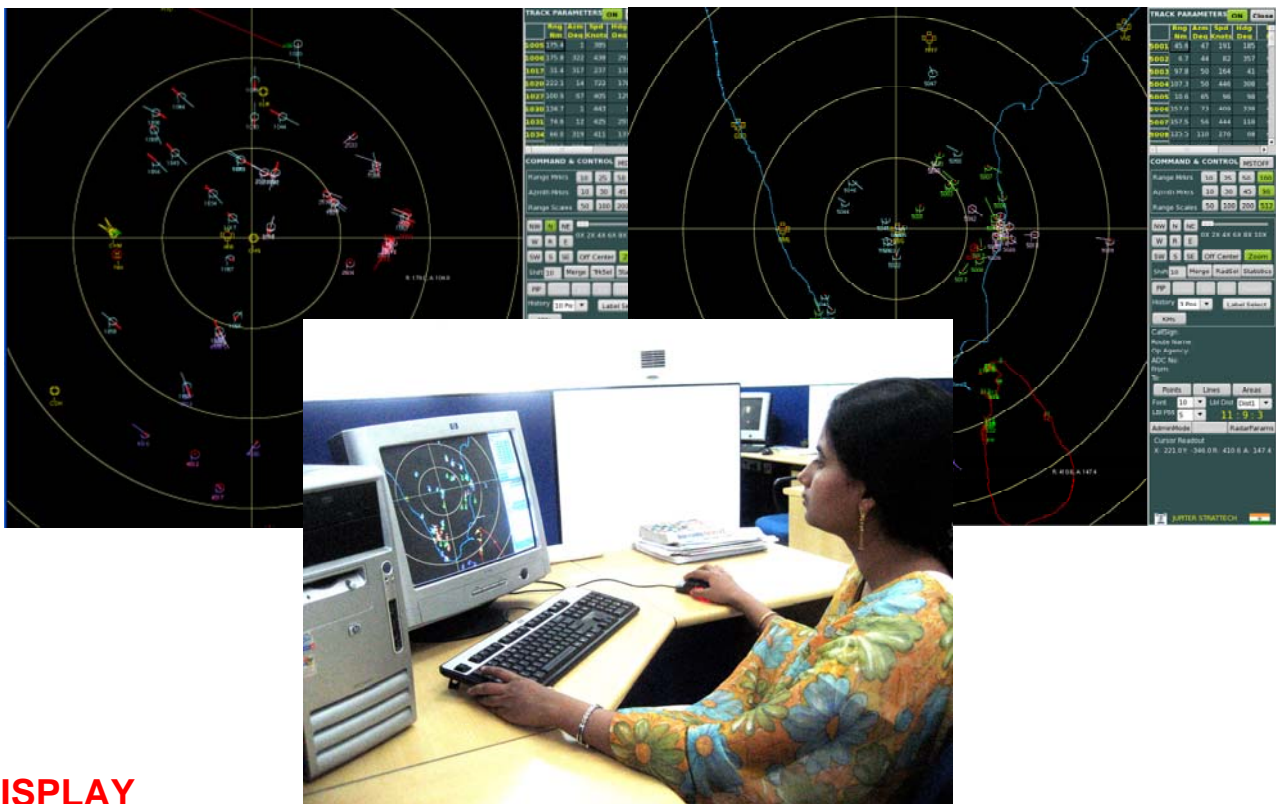
MRDF

MULTI RADAR DATA FUSION

MULTI RADAR DATA FUSION

Multi Radar Data Fusion MRDF developed by Jupiter Strategic Technologies integrates information from multiple radar system sources to produce the most specific and comprehensive unified track of an air-borne object. MRDF is the integration and application of many traditional disciplines and new areas of Engineering such as Decision Theory, Uncertainty Management, Estimation Theory and Artificial Intelligence. MRDF is expected to result in robust operational performance, extended spatial coverage, reduced ambiguities, improved detection performance, increased confidence, enhanced spatial resolution and improved operational reliability.

This presents a consolidated Air Situational Display for coordinated Air Defence.



DISPLAY

The Display system designed and developed by Jupiter Strategic Technologies consists of Radar Air picture and user friendly GUI in the same screen. The user friendly GUI can be customised to interact with MRDF with minimal modification. The operation of Display features such as zooming / panning, picture in picture etc., can be carried out with ease. For MRDF, a feature to display tracks from any combination of radars contributing track data is also available.

RECORD AND REPLAY

The Record and Replay module records in Data Format. The replay in Data format replays the entire screen including the operator actions. In Data recording the MRDF system records system tracks and statistical data in packets on a suitable storage medium for replay and analysis.

Jupiter Strategic Technologies Pvt. Ltd.
#14/15, 2nd Cross, 2nd Main,
Phase I, Electronic City,
Bangalore – 560100, India.

Tele: 91-80-28522271
Fax: 91-80-28522270
email: jstl.info@jupiternmail.in
Web: www.jupiterstrattech.com